

THE LION SLEEPS TONIGHT

für gemischten Chor a cappella und Sopran-Solo

Deutscher Text: Kurt Feltz

Text und Musik: George David Weiss/Hugo Peretti/Luigi Creatore/Solomon Linda
Chorbearbeitung: Pasquale Thibaut

Unisono oder solistisch Geräusch sprechen und nach Belieben Tiergeräusche imitieren (z.B. Affe, Schlange etc.), bis der Melodieinsatz der jeweiligen Stimme erfolgt.

Sopran
Alt



Uh uh uh uh uh uh uh uh

Tenor
Bass



ah ah ah ah ah ah ah ah ah ah ah ah



p

Wim o way o wim o way o wim o way o wim o way wim o way o wim o way o wim o way o wim o way.



Wim o way o wim o way o wim o way o wim o way wim o way o wim o way o wim o way o wim o way.



mf

Wim o way o wim o way o wim o way o wim o way wim o way o wim o way o wim o way o wim o way.



o way o wim o way o wim o way o wim o way.

© 1962, Renewed 1988 and assigned Abilene Music, Inc. Administered by the Songwriters Guild Of America, Weehawken, New Jersey. Rights for the world excluding the USA and Canada, controlled by Memory Lane Music Ltd., London.
MELODIE DER WELT, J. Michel KG, Musikverlag, Frankfurt/Main, für Deutschland, Österreich und Schweiz.
Mit freundlicher Genehmigung.

SG 517

Fotokopieren wird strafrechtlich verfolgt!

© dieser Ausgabe 2009 by Arrangement Verlag, 34497 Korbach, www.arrangement-verlag.de

Solo ad lib.
mf



1. In the jun - gle, the might - y jun - gle, the li - on sleeps to - night.
 2. Near the vil - lage, the peace - ful vil - lage, the li - on sleeps to - night.
 3. Hush my dar - ling, don't fear my dar - ling, the li - on sleeps to - night.

1. Tief im Dschun - gel, da ruft die Trom - mel, der Lö - we schläft heut' Nacht.
 2. Tief im Dschun - gel, da weiß der Jä - ger, der Lö - we schläft heut' Nacht.
 3. Vor den Hüt - ten, da steh'n die Tän - zer, der Lö - we schläft heut' Nacht.

p



Wim o way o wim o way o wim o way o wim o way wim o way o wim o way o



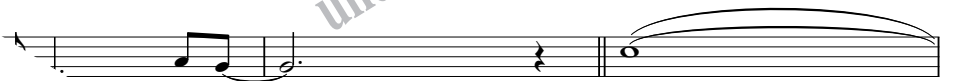
p



— In the jun - gle, the might - y jun - gle, the
 — Near the vil - lage, the peace - ful vil - lage, the
 — Hush my dar - ling, don't fear my dar - ling, the
 — Tief im Dschun - gel, da ruft die Trom - mel, der
 — Tief im Dschun - gel, da weiß der Jä - ger, der
 — Vor den Hüt - ten, da steh'n die Tän - zer, der



wim o way o wim o way. Wim o way o wim o way o wim o way o wim o way



to - night. —
 to - night. —
 - night. —
 ,t. —

Wi _____



o way. Wim o way o wim o way o



_____ wi o wim o way. _____

wim o way o wim o way wim o way o wim o way o wim o way o wim o way.

nach 3. Strophe ◻

Wi _____ wi o wim o way. _____

Wim o way o wim o way o wim o way o wim o way wim o way o wim o way o

Zwischenteil nach 2. Strophe

Wi di di di di di di _____ di, wi di di di di di

wim o way o wim o way. Wi _____ Wi _____

Wim wim o way, wim wim wim wim o

folgt 3. Strophe ⌘

di _____ di, wi di di di di di di.

Wi _____

rim wim o way.

Musical score for the first system. The piano part (top staff) begins with a whole note rest, followed by a series of eighth notes. The bass part (bottom staff) plays a rhythmic accompaniment of eighth notes. The lyrics are: *wim o way o wim o way.* The dynamic marking *f* (forte) is present.

Musical score for the second system. The piano part continues with eighth notes. The bass part continues with eighth notes. The lyrics are: *wim o way o wim o way o wim o way o wim o way.*

Nach für nach werden wieder Urwaldgeräusche wie zu Beginn hinzugefügt und Tierstimmen imitiert, bis der Bass das Lied beendet.

Musical score for the third system. The piano part (top staff) begins with a whole note rest, followed by eighth notes. The bass part (bottom staff) continues with eighth notes. The lyrics are: *Wim o way o wim o way o wim o way o wim o way wim o way o wim o way o*. The dynamic marking *mf* (mezzo-forte) is present.

Musical score for the fourth system. The piano part (top staff) begins with a whole note rest, followed by eighth notes. The bass part (bottom staff) continues with eighth notes. The lyrics are: *wim o way o wim o way.* and *Wim o way o wim o way o wim o way o*.

Musical score for the fifth system. The piano part (top staff) begins with a whole note rest, followed by eighth notes. The bass part (bottom staff) continues with eighth notes. The lyrics are: *wim o way o wim o way o wim o way o*.

Musical score for the sixth system. The piano part (top staff) begins with a whole note rest, followed by eighth notes. The bass part (bottom staff) continues with eighth notes. The lyrics are: *wim o way o wim o way*.